



MATERIALS

Caron® Simply Soft® (6 oz/170 g; 315 yds/288 m)

Sizes XS/S M L XL 2/3XL 4/5XL

Contrast A Dark Country Blue (9711) 3 3 3 3 4 4 balls

Contrast B Ocean (9759) 2 2 2 2 3 3 balls

Size U.S. 8 (5 mm) knitting needles **or size needed to obtain gauge.**
Cable needle. 2 st holders.

ABBREVIATIONS: yarnspirations.com/abbreviations

Alt = Alternate(ing)

Approx = Approximate(ly)

Beg = Begin(ning)

C4B = Slip next 2 stitches onto a cable needle and leave at back of work. K2, then K2 from cable needle.

C4F = Slip next 2 stitches onto cable needle and leave at front of work. K2, then K2 from cable needle.

C6B = Slip next 3 stitches onto cable needle and leave at back of work. K3, then K3 from cable needle.

C6F = Slip next 3 stitches onto cable needle and leave at front of work. K3, then K3 from cable needle.

Cont = Continue(ity)

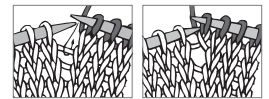
Dec = Decrease(ing)

Inc = Increase(ing)

K = Knit

K2tog = Knit next 2 stitches together

M1 = Make 1 stitch by picking up horizontal loop between stitches and knitting into back of it.



P = Purl

Pat = Pattern

Rem = Remain(ing)

Rep = Repeat

RS = Right side

Ssk = Slip next 2 stitches one at a time. Pass them back onto left-hand needle, then knit through the back loops together.

WS = Wrong side



INTERMEDIATE

SIZES

To fit bust measurement

XS/S 28-34" [91.5 cm]

M 36-38" [91.5-96.5 cm]

L 40-42" [101.5-106.5 cm]

XL 44-46" [112-117 cm]

2/3XL 48-54" [122-137 cm]

4/5XL 56-62" [142-157.5 cm]

Finished bust

XS/S 36" [71-86.5 cm]

M 40" [101.5 cm]

L 44" [112 cm]

XL 48" [122 cm]

2/3XL 52" [132 cm]

4/5XL 56" [142 cm]

GAUGE

18 sts and 24 rows = 4" [10 cm] in stocking st.

**INSTRUCTIONS**

The instructions are written for smallest size. If changes are necessary for larger size(s) the instructions will be written thus (.). Numbers for each size are shown in the same color throughout the pattern. When only one number is given in black, it applies to all sizes.

Note: See charts for Panel Pat A and B on page 4.

Panel Pat A (worked over 12 sts)

1st row: (RS). P2. C4B. C4F. P2.

2nd and alt rows: K2. P8. K2.

3rd row: P2. K8. P2.

5th row: P2. C4F. C4B. P2.

7th row: P2. K8. P2.

8th row: As 2nd row.

These 8 rows form Panel Pat A.

Panel Pat B (worked over 9 sts)

1st row: (RS). K3. C6B.

2nd and alt rows: Purl.

3rd and 7th rows: Knit.

5th row: C6F. K3.

8th row: Purl.

These 8 rows form Panel Pat B.

BACK

With A, cast on **92 (**102-114-122-132-142**) sts.

1st row: (RS). K1. *P1. K1. Rep from * to end of row.

2nd row: P1. *K1. P1. Rep from * to end of row.

Rep last 2 rows of (K1. P1) ribbing 3 times more, then 1st row once.

Next row: (WS). Knit.

Proceed as follows:

1st row: (RS). (Inc row). K**6** (**11-6-7-12-17**). (K1. P2. M1. K6. M1. P2)

2 (**2-3-3-3-3**) times. K1. P2. (K2. M1) **15** (**15-15-18-18-**

18) times. P2. K1. (P2. M1. K6. M1. P2. K1) **2** (**2-3-3-3-3**)

times. K**6** (**11-6-7-12-17**). **115** (**125-141-152-162-172**) sts.

2nd row: Knit all knit sts and purl all purl sts as they appear.

Proceed as follows:

1st row: (RS). K**6** (**11-6-7-12-17**). (K1. Work 1st row of Panel Pat A)

2 (**2-3-3-3-3**) times. K1. P2. (Work 1st row of Panel Pat B) **5** (**5-5-6-**

6-6) times. P2. K1. (Work 1st row of Panel Pat A. K1) **2** (**2-3-3-3-3**)

times. K**6** (**11-6-7-12-17**).

2nd row: Knit all knit sts and purl all purl sts as they appear.

3rd row: K**6** (**11-6-7-12-17**). (K1. Work 3rd row of Panel Pat A) **2**

(**2-3-3-3-3**) times. K1. P2. (Work 3rd row of Panel Pat B) **5** (**5-5-6-**

6-6) times. P2. K1. (Work 3rd row of Panel Pat A. K1) **2** (**2-3-3-3-3**)

times. K**6** (**11-6-7-12-17**).

4th row: As 2nd row. Panel Pats A and B are now in position.

Cont in pat until 9 reps of Panel Pat A and B have been completed.

Break A.

Change to B and cont in pat until work from beg measures 17" [43

cm], ending on a WS row.

Shape armhole: Cast off **4** (**4-7-8-9-10**) sts beg next 2 rows.

107 (**117-127-136-144-152**) sts. Cast off **3** (**3-6-6-8-10**) sts at beg

next 2 rows. **101** (**111-115-124-128-132**) sts.

Dec 1 st at each end of needle **6** (**8-8-8-10-10**) times. **89** (**95-99-**

108-108-112) sts.**

Cont even in pat until armhole measures **6½** (**7-7½-8-8½-9**)"

[**16.5** (**18-19-20.5-21.5-23**) cm], ending on a WS row.

Shape back neck: 1st row: (RS). Pat across **20** (**23-25-25-25-**

-27) sts. **Turn.** Leave rem sts on a spare needle.

2nd row: Knit all knit sts and purl all purl sts as they appear.

3rd row: Pat to last 3 sts. ssk. K1. **19** (**22-24-24-24-26**) sts rem.

Work 3 rows even in pat.

Shape shoulder: Cast off **6** (**7-8-8-8-9**) sts beg of next and

following alt row.

Next row: Work even in pat.

Cast off rem **7** (**8-8-8-8-8**) sts.

With RS facing, slip center **49** (**49-49-58-58-58**) sts onto a st holder.

1st row: Join B and pat across rem **20** (**23-25-25-25-27**) sts.

2nd row: Knit all knit sts and purl all purl sts as they appear.

3rd row: K1. K2tog. Pat to end of row. **19** (**22-24-24-24-26**) sts rem.

Work 4 rows even in pat.

Shape shoulder: Cast off **6** (**7-8-8-8-9**) sts beg of next and

following alt row.

Next row: Work even in pat.

Cast off rem **7** (**8-8-8-8-8**) sts.

**FRONT**

Work from ** to ** as given for Back.

Cont even in pat until armhole measures **4½ (5-5½-6-6½-7)"** [**11.5 (12.5-14-15-16.5-18)** cm], ending on a WS row.

Shape neck: 1st row: (RS). Pat across **23 (26-28-28-28-30)** sts.

Turn. Leave rem sts on a spare needle.

2nd row: Knit all knit sts and purl all purl sts as they appear.

Dec 1 st at neck edge on next and every following 4th row 3 times more. **19 (22-24-24-24-26)** sts.

Work even in pat until armhole measures same length as Back, ending on a WS row.

Shape shoulder: Cast off **6 (7-8-8-8-9)** sts beg of next and following alt row.

Next row: Work even in pat. Cast off rem **7 (8-8-8-8-8)** sts.

With RS facing, slip center **43 (43-43-52-52-52)** sts onto a st holder. Join B and pat across rem **23 (26-28-28-28-30)** sts.

2nd row: Knit all knit sts and purl all purl sts as they appear.

Dec 1 st at neck edge on next and every following 4th row 3 times more. **19 (22-24-24-24-26)** sts.

Work even in pat until armhole measures same length as Back, ending on a RS row.

Shape shoulder: Cast off **6 (7-8-8-8-9)** sts beg of next and following alt row.

Next row: Work even in pat. Cast off rem **7 (8-8-8-8-8)** sts.

SLEEVES

With A, cast on **35 (35-37-37-39-39)** sts.

Work 9 rows in (K1. P1) ribbing as given for Back, ending on a RS row.

Next row: (WS). Knit.

Proceed as follows:

1st row: (RS). K**7 (7-8-8-9-9)**. (P2. M1. K6. M1. P2. K1) twice. K**6 (6-7-7-8-8)**. **39 (39-41-41-43-43)** sts.

2nd row: Knit all knit sts and purl all purl sts as they appear.

Proceed in pat as follows:

1st row: (RS). K**7 (7-8-8-9-9)**. Work 1st row of Panel Pat A. K1. Work 1st row of Panel Pat A. K**7 (7-8-8-9-9)**.

2nd row: Knit all knit sts and purl all purl sts as they appear.

3rd row: K**7 (7-8-8-9-9)**. Work 3rd row of Panel Pat A. K1. Work 3rd row of Panel Pat A. K**7 (7-8-8-9-9)**.

4th row: As 2nd row.

Panel Pat A is now in position.

Cont in pat, inc 1 st each end of next row and every following **8th (6th-6th-4th-4th-4th)** row **10 (12-15-19-20-22)** times more, AT SAME TIME, changing to B when Sleeve measures **12½ (13-13½-13½-14-14½)"** [**32 (33-34-34-35.5-35.5)** cm]. **61 (65-73-81-85-89)** sts.

Cont even in pat until Sleeve from beg measures 19" [48.5 cm], ending on a WS row.

Shape top: Keeping cont of pat, cast off **4 (4-7-8-9-10)** sts beg next 2 rows. **53 (57-59-65-67-69)** sts. Dec 1 st each end of needle on next and every alt row **5 (6-6-9-7-8)** times more.

Dec 1 st each end of needle every following 4th row **3 (3-4-0-4-4)** times.

Dec 1 st each end of needle on next and every alt row **6 (7-6-10-8-9)** times. **23 (23-25-25-27-27)** sts. Cast off 2 sts beg next 2 rows. Cast off rem **19 (19-21-21-23-23)** sts.

FINISHING

Pin garment pieces to measurements and cover with damp cloth leaving cloth to dry.

Sew right shoulder seam.



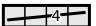
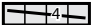
Neckband: With RS facing and B, pick up and knit 17 sts down left front neck edge. K**43 (43-43-52-52-52)** from Front st holder dec 2 sts evenly across. Pick up and knit 17 sts up right front neck edge. K**49 (49-49-58-58-58)** from back st holder, dec 3 sts evenly across. **121 (121-121-139-139-139)** sts.

Beg on a 2nd row, work 6 rows in (K1. P1) ribbing as given for Back. Cast off in ribbing.

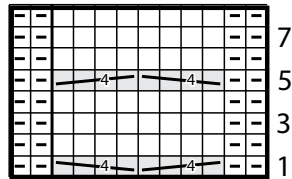
Sew left shoulder and neckband seam.

Sew sleeve and side seams. Set in sleeves.

Key


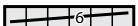
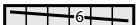
-  = Knit on RS rows. Purl on WS rows.
-  = Purl on RS rows. Knit on WS rows.
-  = C4B
-  = C4F

Panel Pat A

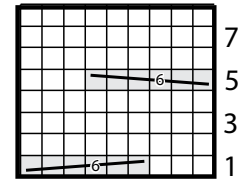


Start Here

Key

-  = Knit on RS rows. Purl on WS rows.
-  = C6B
-  = C6F

Panel Pat B



Start Here

